

# FLEXIBLE METHODOLOGIES FOR PARTICIPATION IN CLIMATE CHANGE ADAPTATION

Marie Pontoppidan (NORCE)

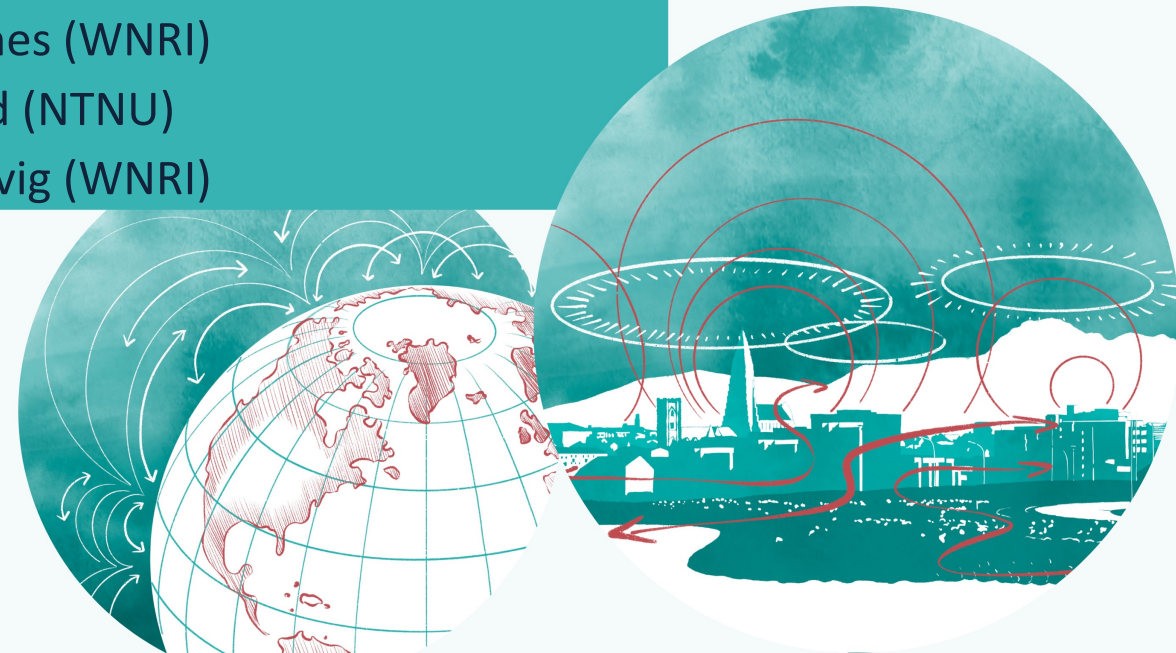
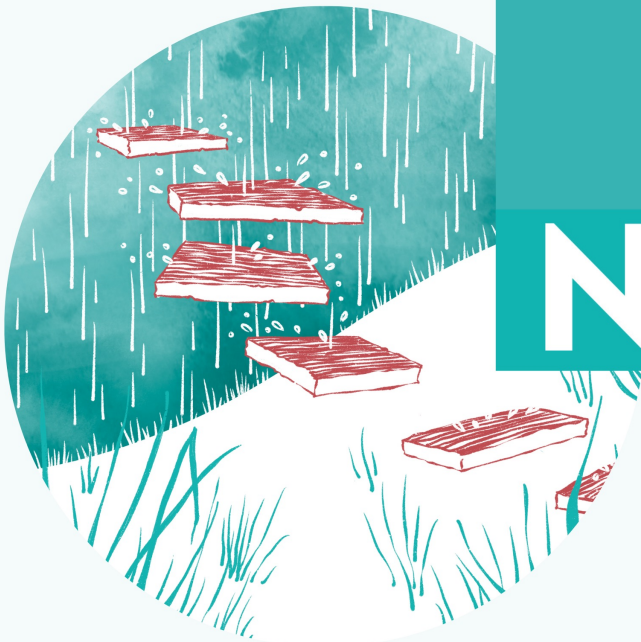
Mari Hansen Korsbrekke (WNRI)

Synnøve Beitnes (WNRI)

Jan Ketil Rød (NTNU)

Halvor Dannevig (WNRI)

# NOCCA



# DO WE NEED FLEXIBLE METHODOLOGIES?

---

NOCCA



# DO WE NEED FLEXIBLE METHODOLOGIES?

---

# NOCCA

# YES

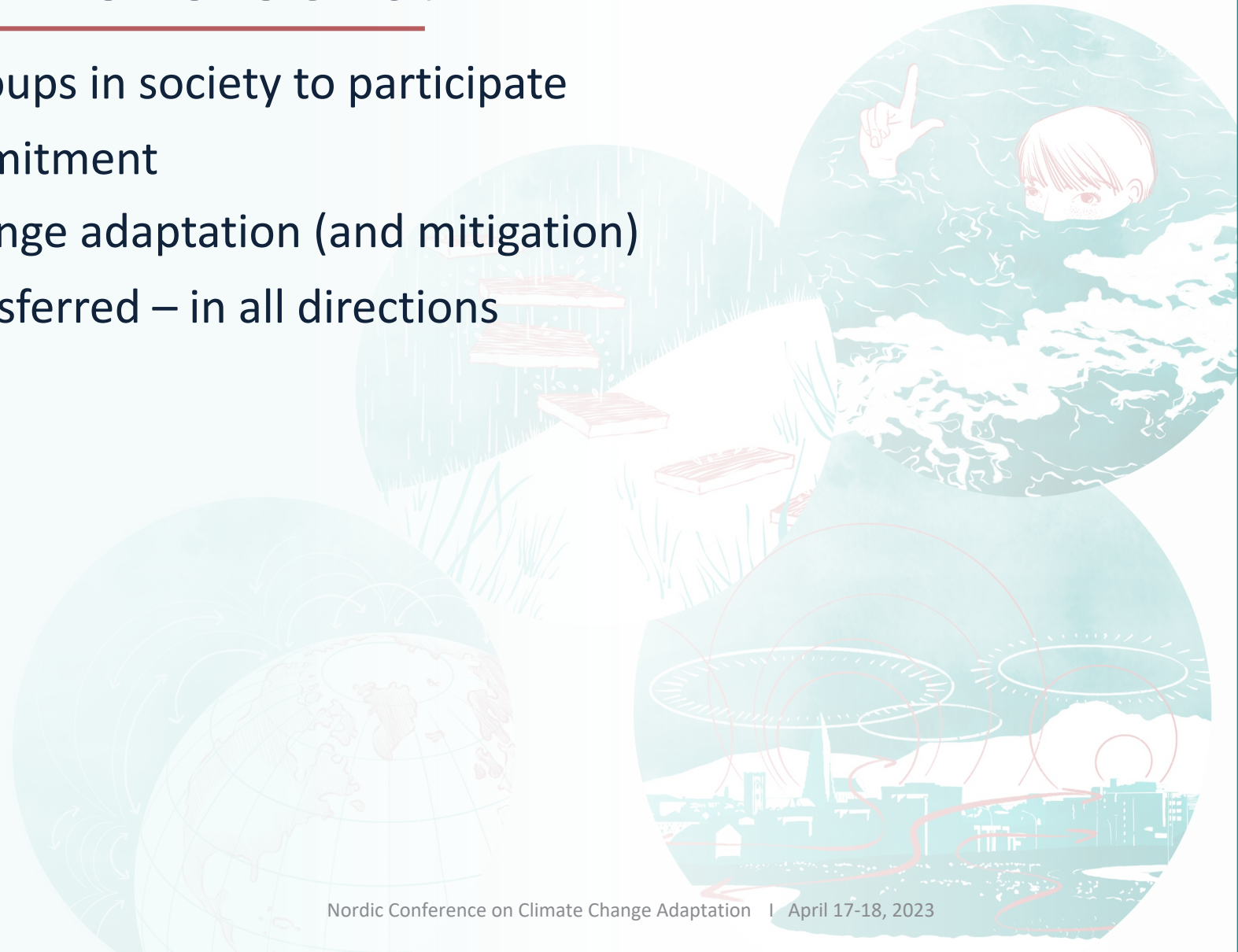


# DO WE NEED FLEXIBLE METHODOLOGIES?

---

- Enable more social classes and groups in society to participate
- Strengthen engagement and commitment
- Enhance legitimacy of climate change adaptation (and mitigation)
- Ensure valuable knowledge is transferred – in all directions

NOCCA



# RESULTS FROM PROJECT “PARTICIPATORY METHODS FOR SUSTAINABLE CLIMATE CHANGE ADAPTATION”

---

NOCCA

- Truls Folkestad (Sunnfjord municipality)
- Kaja Standal Moen (Kinn municipality)
- Wenche-Mari Bliksås (Osterøy municipality)
- Lene Omdahl (Vestland County Council)



# PARTICIPATORY METHODS FOR SUSTAINABLE CLIMATE CHANGE ADAPTATION

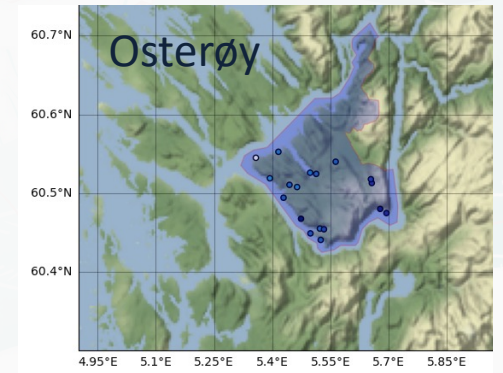
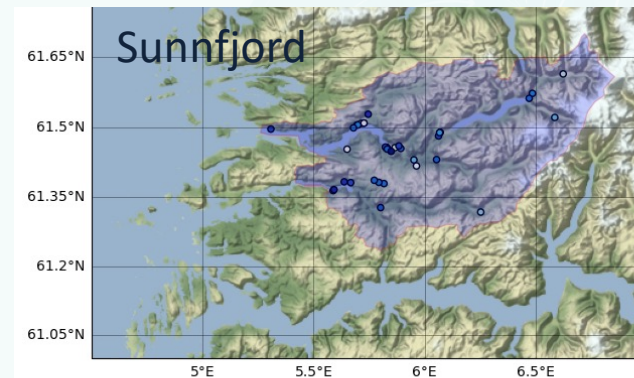
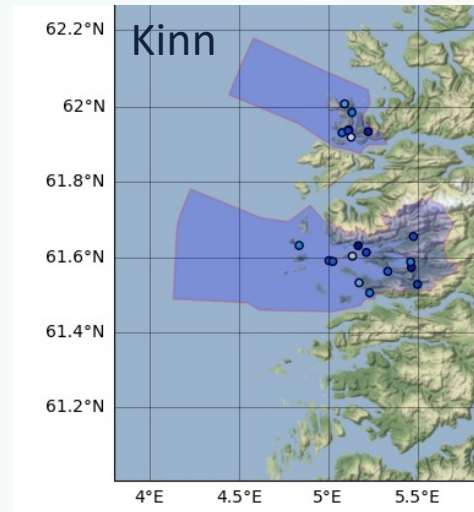
NOCCA

- Develop participatory methods to enhance the adaptation capacity in municipalities
- Develop citizen science methods to increase legitimacy and awareness to the knowledge-base for climate adaptation
- Enhance the ability of counties to assist the municipalities in their adaptation work
- Test participation methods to increase involvement in planning processes
- Develop visualization and communication methods that make the knowledge accessible and relevant to citizens and decision-makers



# CITIZEN SCIENCE AND WORKSHOPS

- Sunnfjord municipality
- Osterøy municipality
- Kinn municipality
- Specific training workshops for Netatmo and CitizenSensing app



# WORKSHOP AND SEMINARS

# NOCCA

- Sunnfjord municipality
  - Flooding in Viksdalen
- Osterøy municipality
  - Renewal of the land-use part of the municipal master plan
- Kinn municipality
  - Adaptation in agriculture

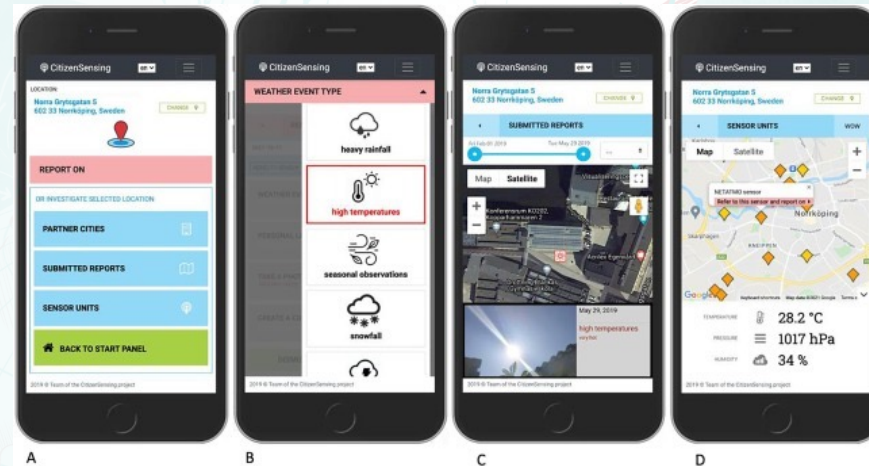
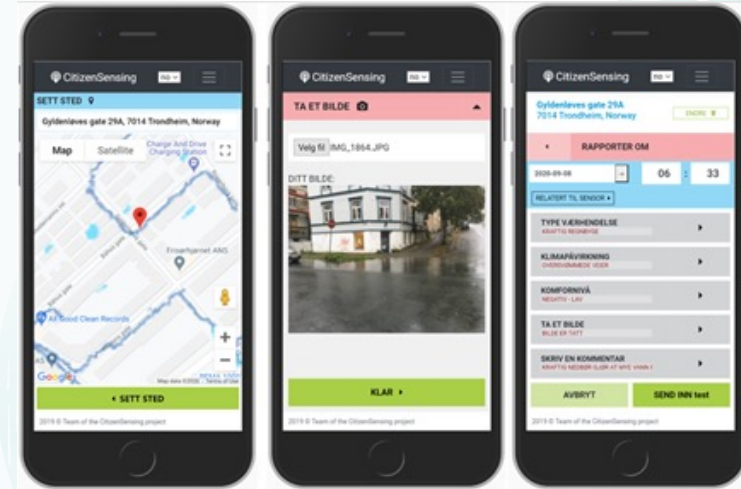




# CITIZENSENSING APP (ACTIVE CITIZEN SCIENCE)

# NOCCA

- Report incidents in web application
- Pictures and position included
- Climate information tailored the municipalities



# NETATMO RAIN GAUGE (PASSIVE CITIZEN SCIENCE)

- Automated weather station
- Voluntary sharing of data online
- Reasonably priced
- Already fairly wide use in Europe
- Used in official weather forecast (yr.no)



# WHY USE CITIZEN SCIENCE AS PARTICIPATION METHOD?

## Researcher point of view:

- New, more, different data
- Higher frequency and spatial coverage of data
- Arena for trust building
- Enhance awareness and legitimacy in society
- Diversity in participation methods

## Citizen point of view:

- Motivating to contribute
- Your competence and local knowledge is used



Photo: M. Pontoppidan

# IDENTIFIED BARRIERS

- Resource-intensive work
- Language barriers must be overcome – time
- Results can be difficult to visualize and verify
- Best method depends on problem to solve – and personality to involved persons
- Ethics – exposing conflict of interests
- Recruit and retain



# DRIVERS

# NOCCA

- Relevant and engaging theme
  - The feeling of contributing
- Flexible participation
  - Citizen science
  - Workshops
  - Interviews
- Trust and dialogue
  - Existing trust
  - Group composition



THANK YOU

NOCCA

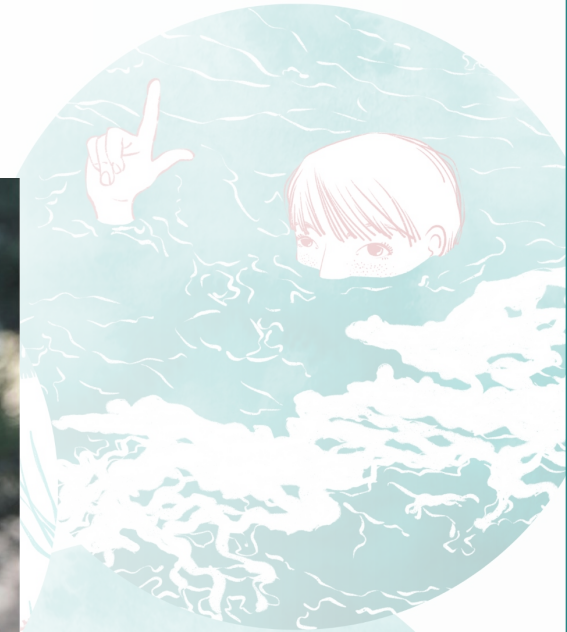
# Marie Pontoppidan

Research Director Regional Climate

[mapo@norceresearch.no](mailto:mapo@norceresearch.no)

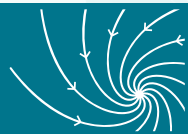
+47 56 10 75 47

Jahnebakken 5, 5007 Bergen, Norway



NORCE

BJERKNES CENTRE  
for Climate Research



NORSK SENTER  
FOR BEREKRAFTIG  
KLIMATILPASSING

